



# GMT MONTHLY MEMBERSHIP PROGRESS REPORT

Results as of: 2/29/2020

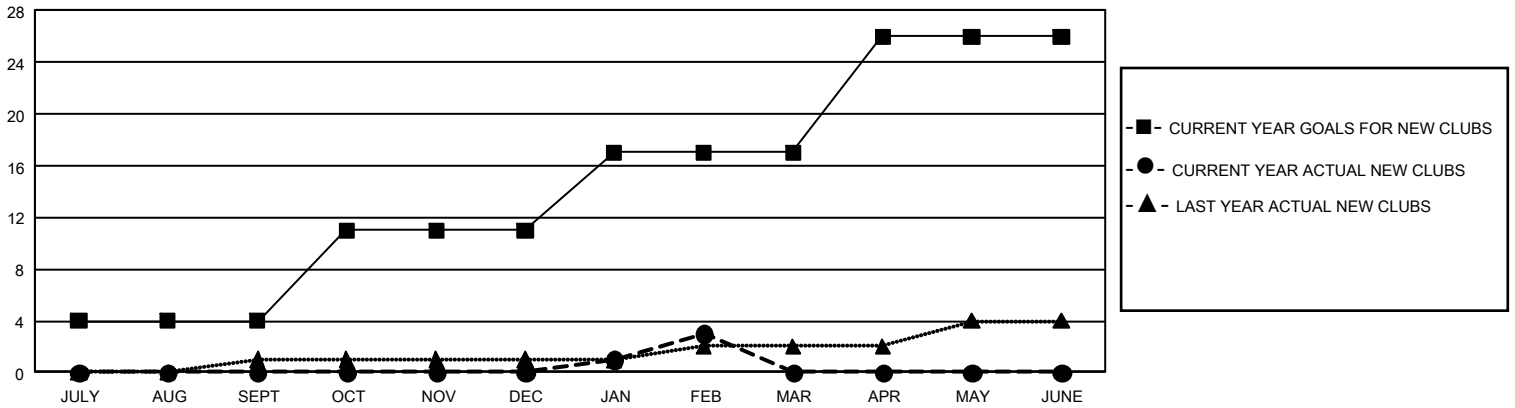
## GMT Constitutional Area 1, Group N

GMT: OPEN

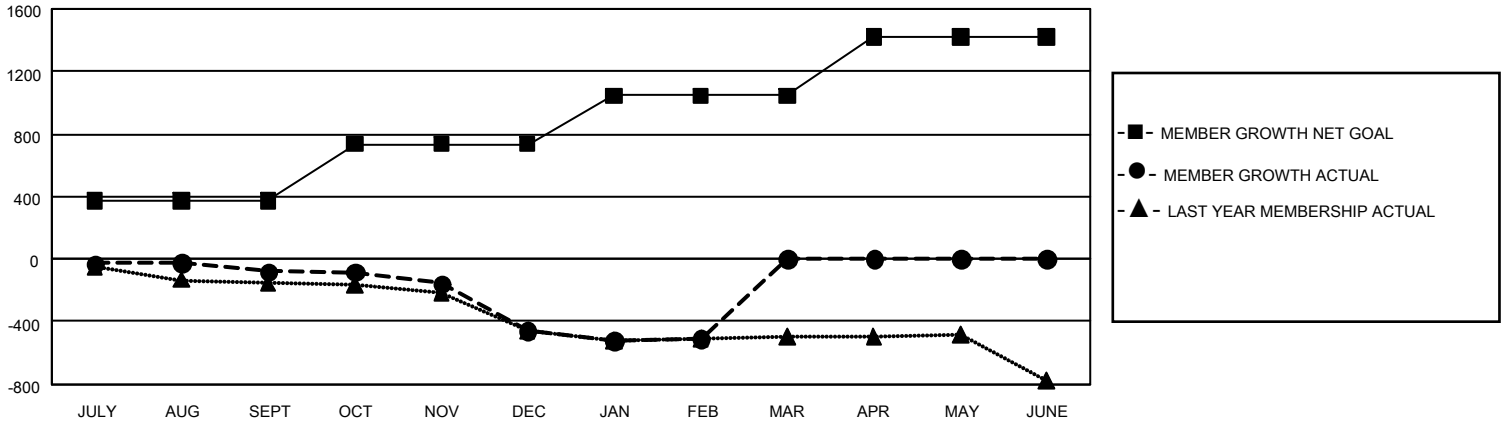
REPORT DOES NOT INCLUDE CLUBS IN UNDISTRICTED AREAS.

Clubs				Members			
RESULTS FOR 2019-2020				RESULTS FOR 2019-2020			
QUARTER	NEW CLUB GOAL	NEW CLUBS	DROPPED CLUBS	QUARTER	MEMBER GROWTH NET GOAL	MEMBER GROWTH ACTUAL	DROPPED MEMBERS ACTUAL (including transfers)
JULY/AUG/SEPT	12	0	1	JULY/AUG/SEPT	1,113	370	407
OCT/NOV/DEC	21	0	13	OCT/NOV/DEC	1,095	225	568
JAN/FEB/MAR	18	3	2	JAN/FEB/MAR	933	327	342
APR/MAY/JUNE	27	0	0	APR/MAY/JUNE	1,122	0	0

**GOALS AND ACTUAL NEW CLUBS CUMULATIVE**



**GOALS AND ACTUAL MEMBERS CUMULATIVE**



<b>DROPPED CLUBS: 16</b>	273 CLUBS OF 599 ADDED 1 OR MORE NEW MEMBERS	<b><u>GENDER DISTRIBUTION</u></b> MALE            9,018 (66.85%) FEMALE         4,471 (33.15%)
<b><u>DROPPED MEMBERS</u></b> DECEASED            140 CLUB CANCELLED      114 OTHER                 1,063 <hr/> TOTAL                 1,317	<a href="#">CLICK HERE FOR CUMULATIVE MEMBERSHIP DATA</a>	TOTAL FAMILY UNIT MEMBERS            2,613  FAMILY MEMBERS PAYING HALF DUES      1,336